

aVNC – RealVNC™ configuration

Introduction

This guide shows the configuration setup for a RealVNC™ server connecting to aVNC.

Sections

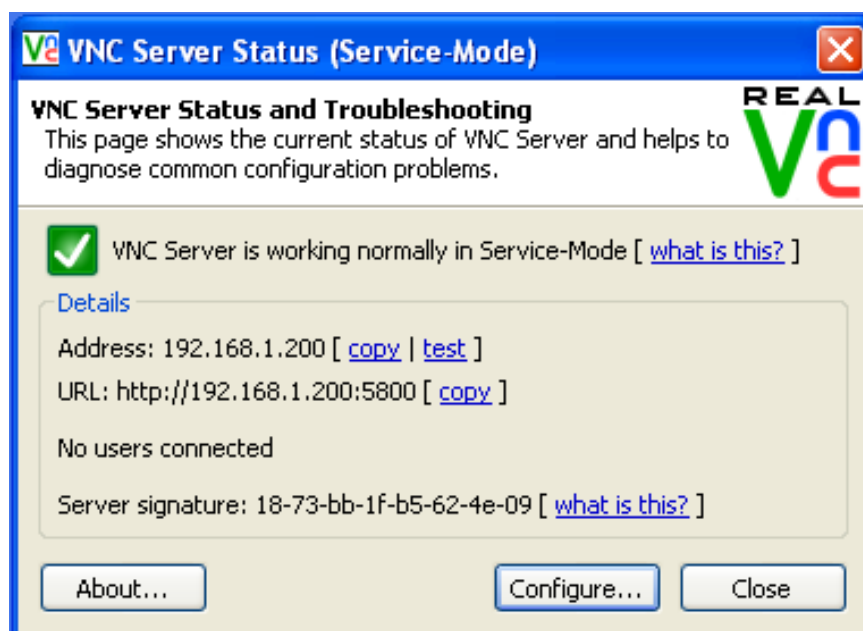
- Setting up RealVNC™
- Additional Configuration
- Trouble shooting

Setting up RealVNC™

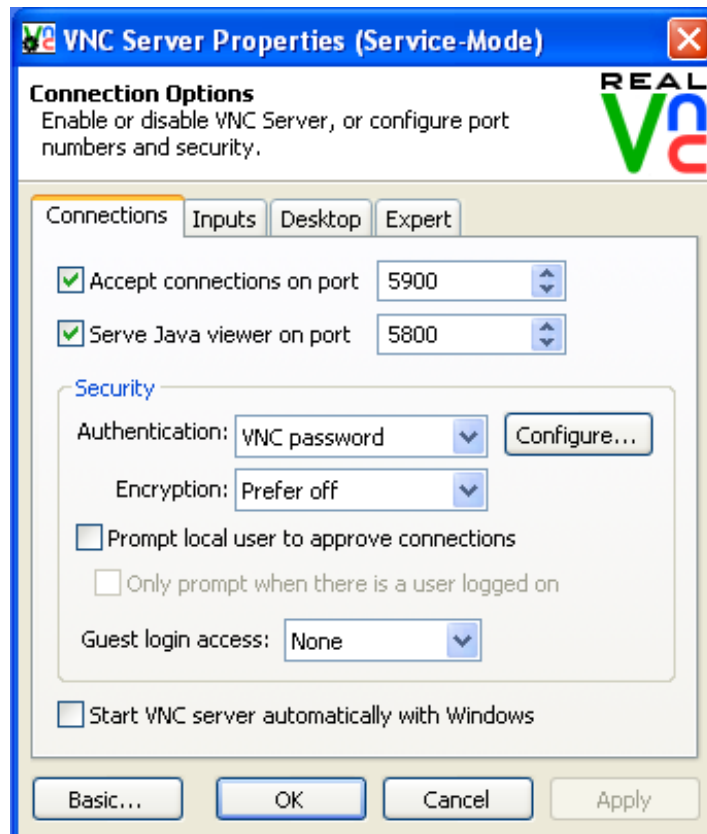
First you need to bring up the VNC configuration window. To do this double click on the RealVNC™ icon in the system tray which should look like:



This should bring up a dialogue that looks like this:

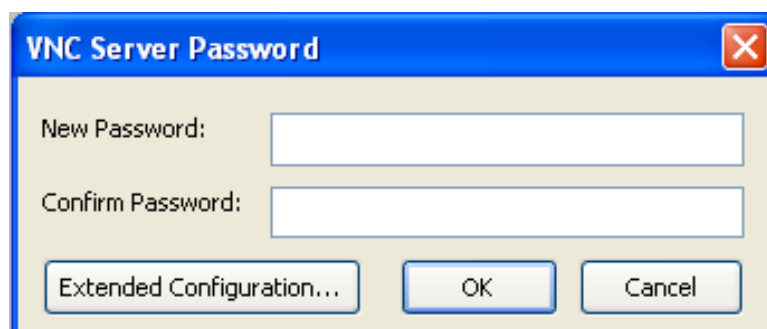


From here click the 'Configure...' button. This will open up the configuration parameters for the VNC server. This should look like this:



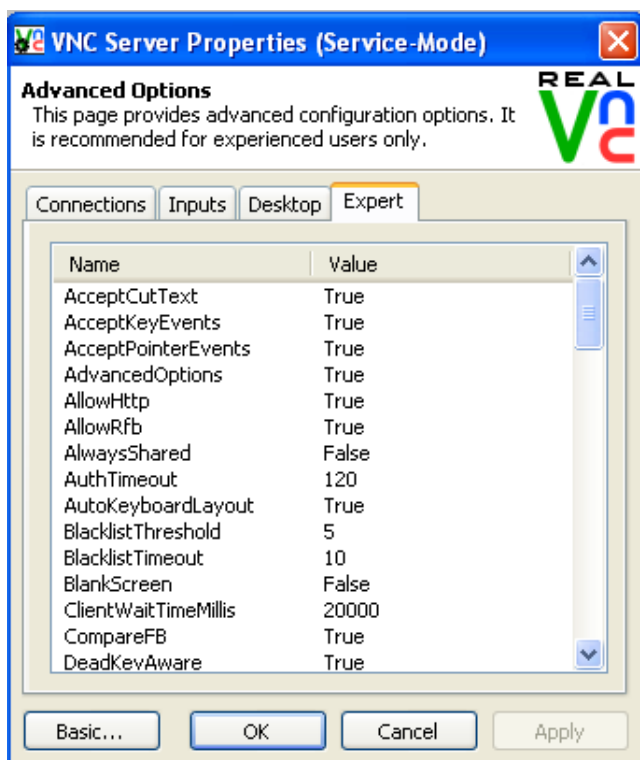
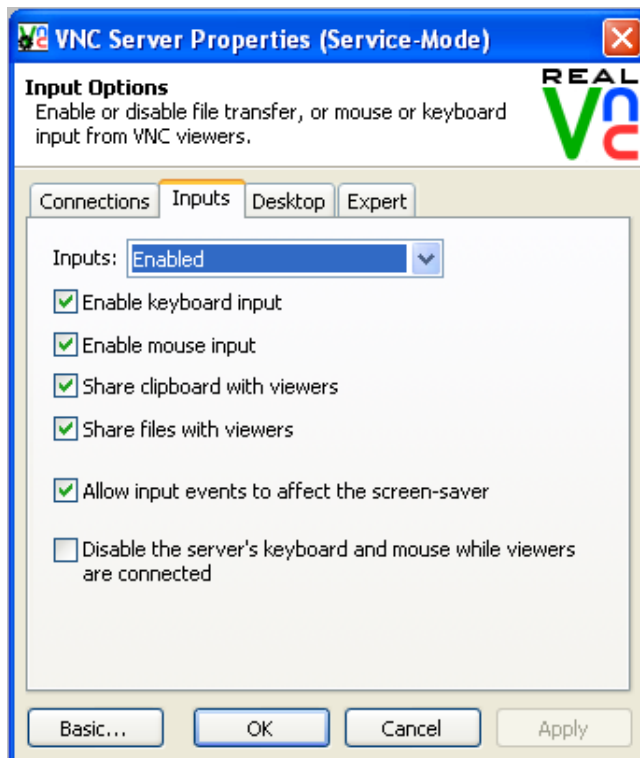
You now need to make sure encryption is set to 'Prefer off' or 'Prefer On' and authentication is set for VNC password. When you have set this click the 'Configure...' to set the password. The password dialogue looks like this:

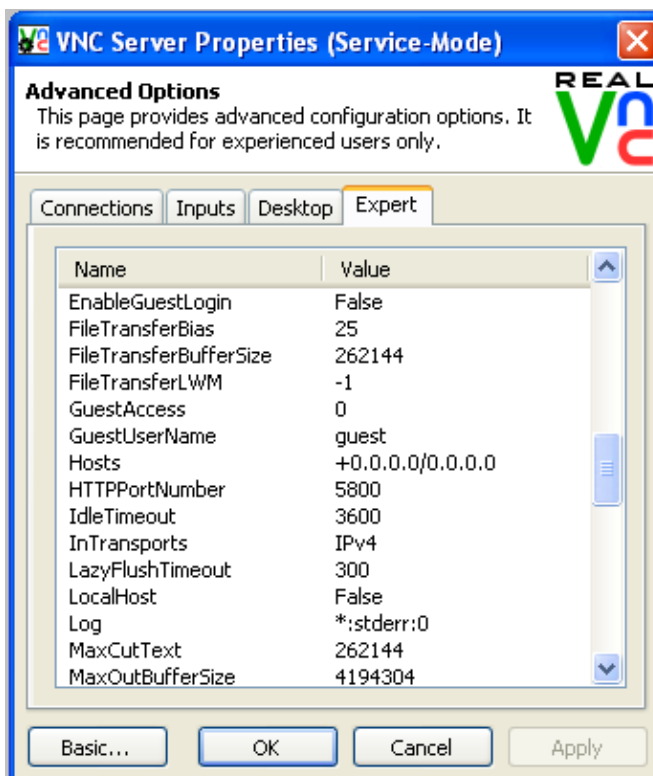
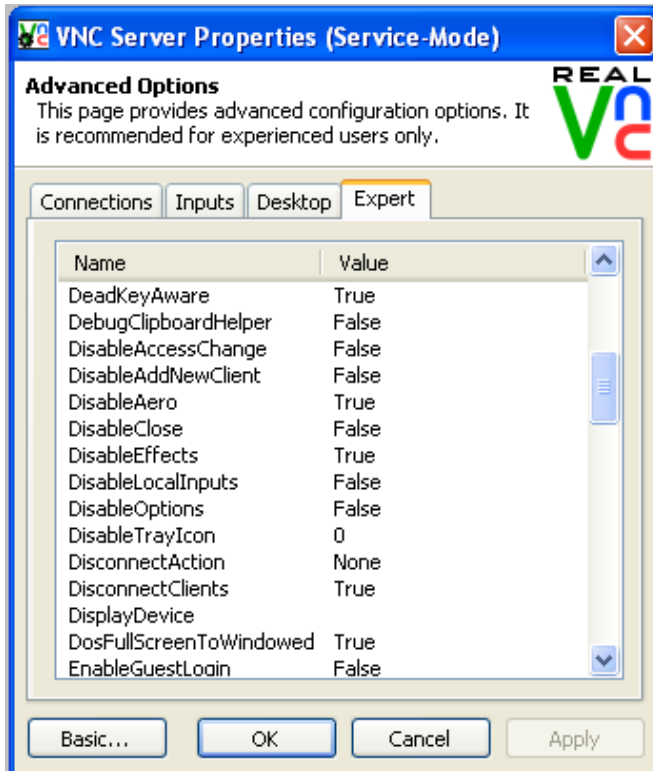
Click 'OK' once you have entered your password and you will be returned to the connection screen. You should now be able to connect to your RealVNC™ server using aVNC.

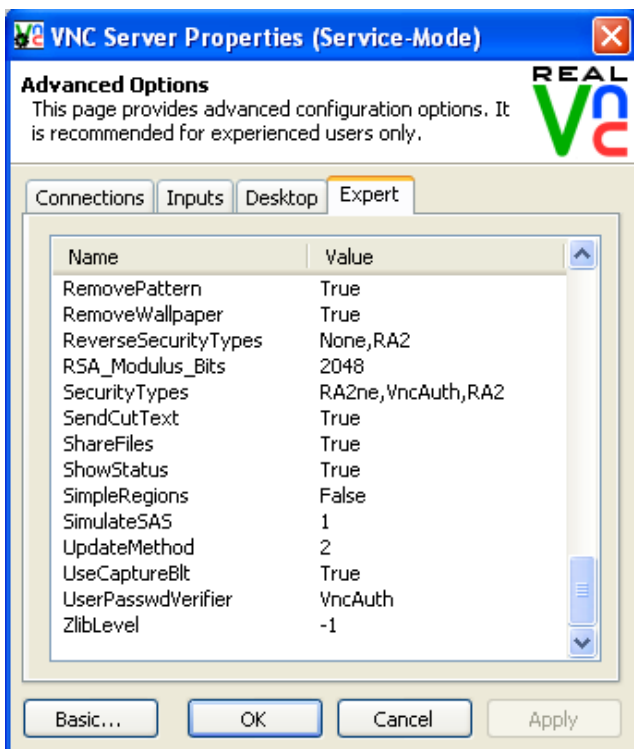
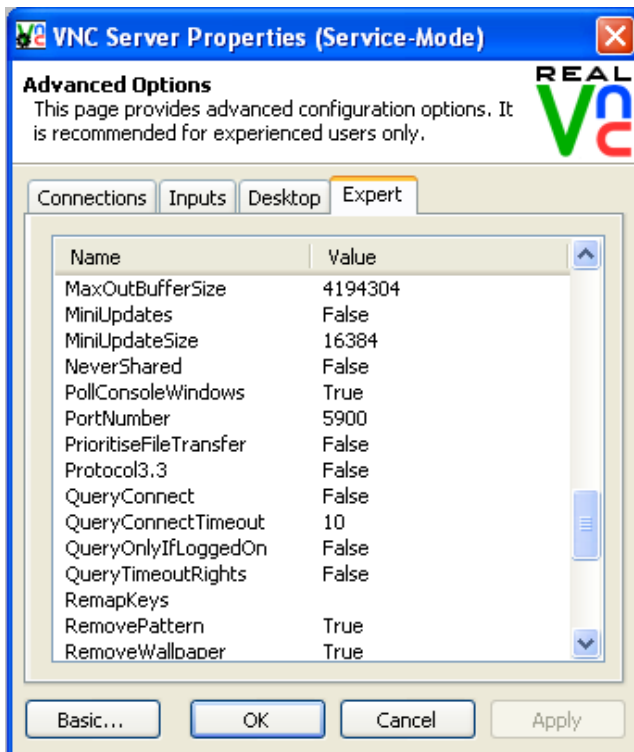


Additional Settings

Once you have done this you should not need to configure any further parameters. For completeness here for this guide here are the other settings for this VNC server.







Trouble shooting

If you are having issues a particular connection please remove the connection from the home screen and try again. This can be done by clicking the edit button and then tapping on the connection. A delete dialog will pop up for confirming delete. Then click the done in the top right, followed by Add to re-setup a new connection.

Also check any firewalls on the machine to see if port 5900 is blocked or specific VNC applications are blocked.

Further issues please email support@aiflex.com